

## HDMI to DSI (MIPI) Board

Model: HDMItoDSI-2K      产品型号: HDMI TO DSI  
Function: HDMI to DSI      产品功能: HDMI TO DSI  
Version: Ver. 1.2    版本信息: Ver 1.2  
Date: 13 Mar. 2017    日期: 2017/3/13

- I. Product Overview 1、产品概述
- II. Product Characteristics 2、产品特性
- III. Product Dimension 3、产品尺寸
- IV. Tested Screen Models 4、已测试屏幕
- V. Using Guidance 5、使用方法
  - a. Power On or Off Steps    5.1 上电掉电时序
  - b. PC Using Guidance      5.2 PC 使用说明
  - c. Raspberry Pi Using Guidance    5.3 树莓派使用说明

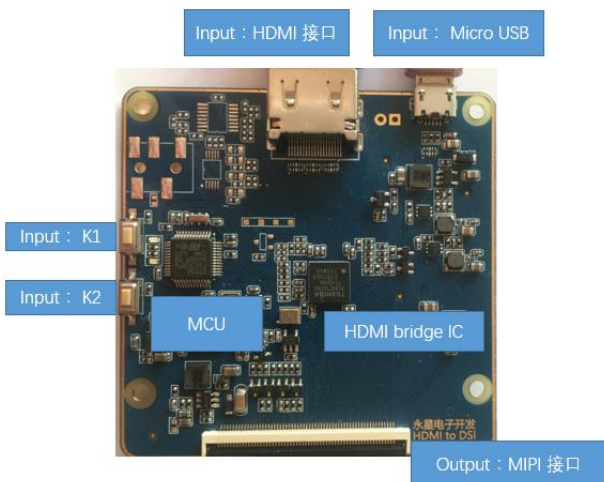
### I. Product Overview    1 产品概述:

HDMItoDSI-2K is a super driver board which convert the HDMI to DSI(MIPI) for LCD and AMOLED screens.  
HDMI to DSI (mipi) Board V1.2 是一款支持 DSI (MIPI) 接口的液晶屏&AMOLED 屏方案驱动板

Supported Resolution:支持分辨率: 2560\*1600@60Hz  
2560\*1440@60Hz  
2048\*1536@60Hz  
1920\*1200@60Hz  
1920\*1080@60Hz  
1366\*768@60Hz  
1280\*720@60Hz etc

Application Range: PC, Raspberry Pi, VR, 3D LCD Printer, Advertising Machine, etc.  
应用范围: PC、树莓派显示器、VR、3D LCD printer、广告机等

### II. Product Characteristics    2 产品特性



Input: HDMI A TYPE 2.0 & 1.4      输入: HDMI A TYPE 2.0 & 1.4  
Micro USB Voltage: 4.5V-5.5V      Micro USB 电压: 4.5~5.5V  
Current: 500mA      电流: 500mA  
Reserved Function Ports: K1 and K2 for Power switch, dimmer, screens switching

K1、K2: 预留功能 开关、调光、切换屏幕

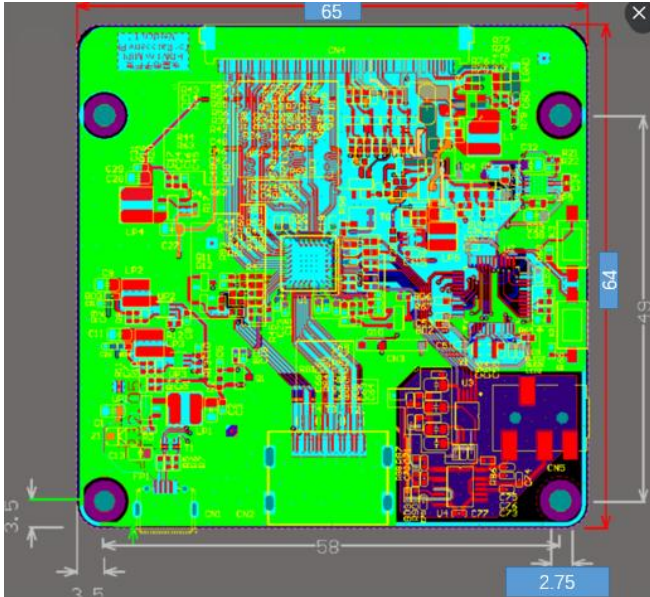
Output: 3.3V, 1.8V MINI Signal, +/- 5V, 2 lines B/L signal

输出: 3.3V、1.8V、mipi 信号、+/- 5v、2 路 B/L 信号

**III. Product Dimension 3 产品尺寸:**

64mm(L)x65mm(W)x1.2mm(T)

长: 64mm 宽: 65mm 厚: 1.2mm

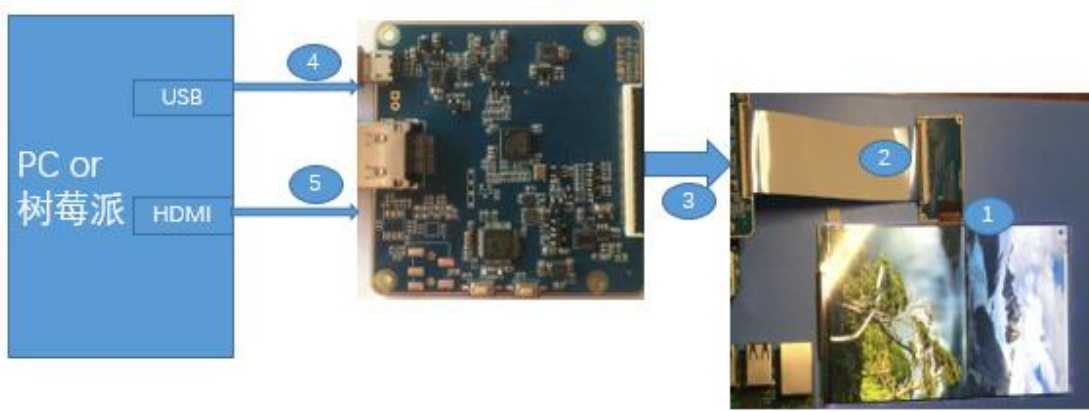


**IV. Tested Screens Models 4 已点亮屏幕型号:**

Brand	Model	Screen	Size	Resolution(S)	Resolution(D)	Frequency	MARK
厂商	型号	屏幕材质	尺寸	单屏分辨率	双屏分辨率	频率	
SHARP	LS029B3SX02	LCD	2.89 1440*1440	2880*1440	70		
SHARP	LS055T1SX01	LCD	5 1080*1920	NA	50-60		
SHARP	LS055R1SX03	LCD	5.5 1440*2560	NA	50-60		
SHARP	LS055R1SX04	LCD	5.5 1440*2560	NA	50-60		
SHARP	LS060R1SX01	LCD	6 1440*2560	NA	50-60		
SHARP	LS079L1SX02F	LCD	7.9 1536*2048	NA	50-60		
JDI	ACX450AKN-7	LCD	5 1080*1920	NA	50-60		
JDI	ACX465AKM-7	LCD	5.9 1080*1920	NA	50-60		
JDI	LPM055A138A	LCD	5.5 1440*2560	NA	50-60		
JDI	LPM055A184A	LCD	5.5 1440*2560	NA	50-60		
JDI	LT070ME05000	LCD	7 1200*1920	NA	50-60		
JDI	TFTMD089030	LCD	8.9 2560*1600	NA	50-60		
AUO	H546DLB01.2	AMOLED	5.5 1080*1920	NA	50-60		
AUO	H381DLN01.2	AMOLED	3.81 1080*1200	2160*1200	90		
Everdisplay							
和辉	E295FMM1	AMOLED	2.95 1080*1200	2160*1200	90		
BOE	NA	LCD	3.5 1440*1600	2880*1600	60		

V. Using Guidance 5 使用方法

a. Power On Steps 5.1 上电掉电时序



Power On Steps 上电时序:

- |  |                     |
|--|---------------------|
| 1. Connect the HDMI to DSI-2K with the screen port | 1、连接转接板与屏幕接口        |
| 2. Connect the HDMI to DSI-2K with the             | 2、连接转接板与宽排线         |
| 3. Connect the with the main board                 | 3、连接宽排线与主板          |
| 4. Insert the HDMI A TYPE port                     | 4、插入 HDMI A TYPE 接口 |
| 5. Insert the USB power supply port                | 5、插入 USB 供电接口       |

Power Off Steps 掉电时序:

- |  |                     |
|--|---------------------|
| 1. Take off the USB power supply port                  | 1、拔除 USB 供电接口       |
| 2. Take off the HDMI A TYPE port                       | 2、拔除 HDMI A TYPE 接口 |
| 3. Disconnect the with the main board                  | 3、断开排线与主板连接         |
| 4. Disconnect the HDMI to DSI-2K with the              | 4、断开转接板与宽排线         |
| 5. Disconnect the HDMI to DSI-2K with the screens port | 5、断开转接板与屏幕接口        |

b. PC Using Guidance 5.2 PC 使用说明

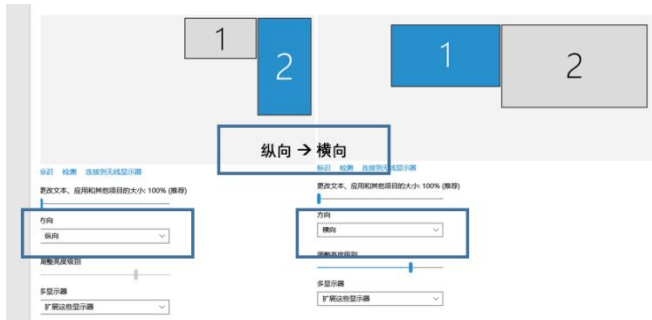
Most of the MIPI screen are vertical type which need to adjust the graphics mode

Replication mode Extension mode Vertical and horizontal adjustment

大部分 MIPI 屏为竖屏需调整显卡模式

复制模式扩展模式纵横向调整





c. Raspberry Pi Using Guidance 5.3 树莓派使用说明



- 1、HDMI TO DSI Board  
尺寸兼容树莓派4个螺孔
- 2、不同屏幕树莓派设定不同  
设定方法请联系厂家所要资料

. HDMI to DSI Board Dimension  
Match Raspberry Pi four screw holes  
尺寸兼容树莓派 4 个螺孔

. Different Screens with Different Setting  
The Setting Details, please contact with us.  
不同屏幕树莓派设定不同，设定方法请联系  
厂家所需资料