



# POCUS MADRID AIRWAYS, EMERGENCIES AND INTERVENTIONS

23-24 February 2020

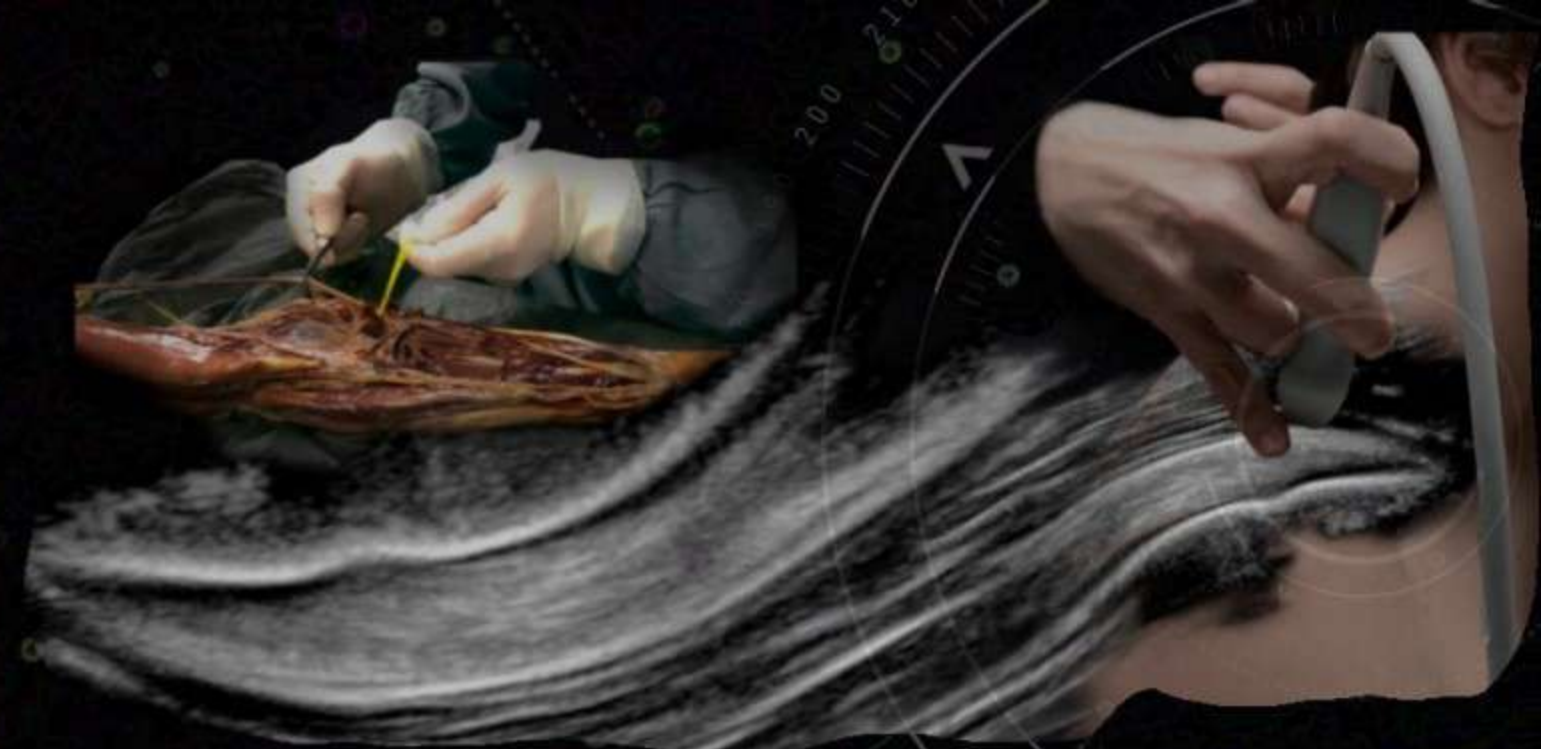
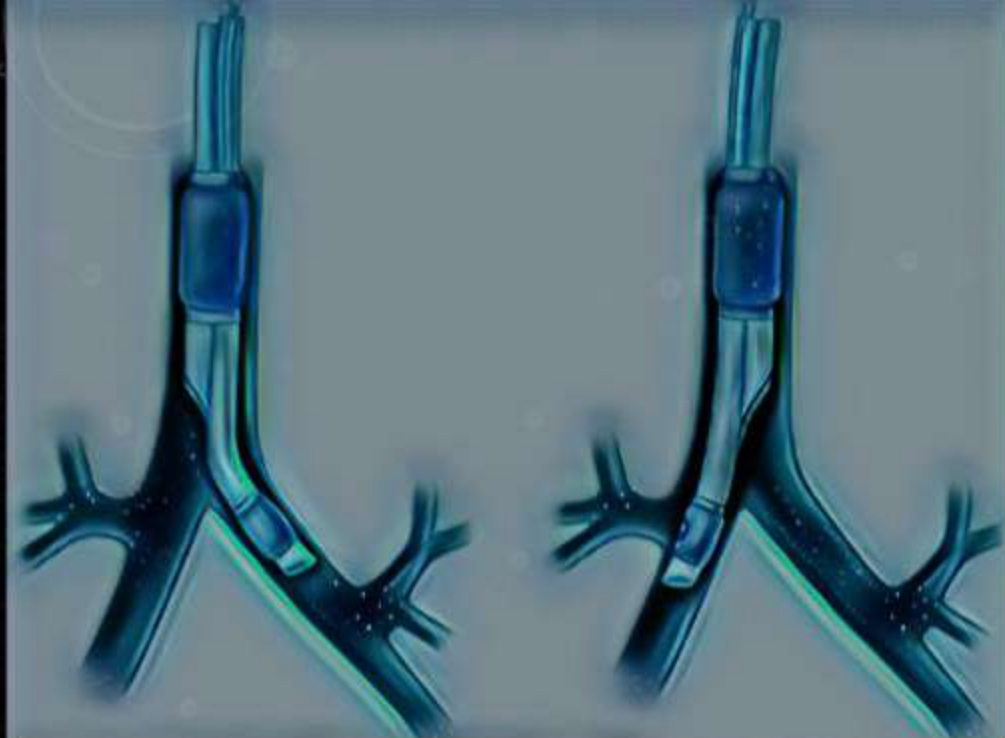


INTERNATIONAL  
COLLABORATION

POCUS MOSCOW &  
ULTRADISSECTION GROUP







Do you think about practical work with CADAVER material for your skills?



Did you combine emergency interventions with Point of Care Ultrasound?

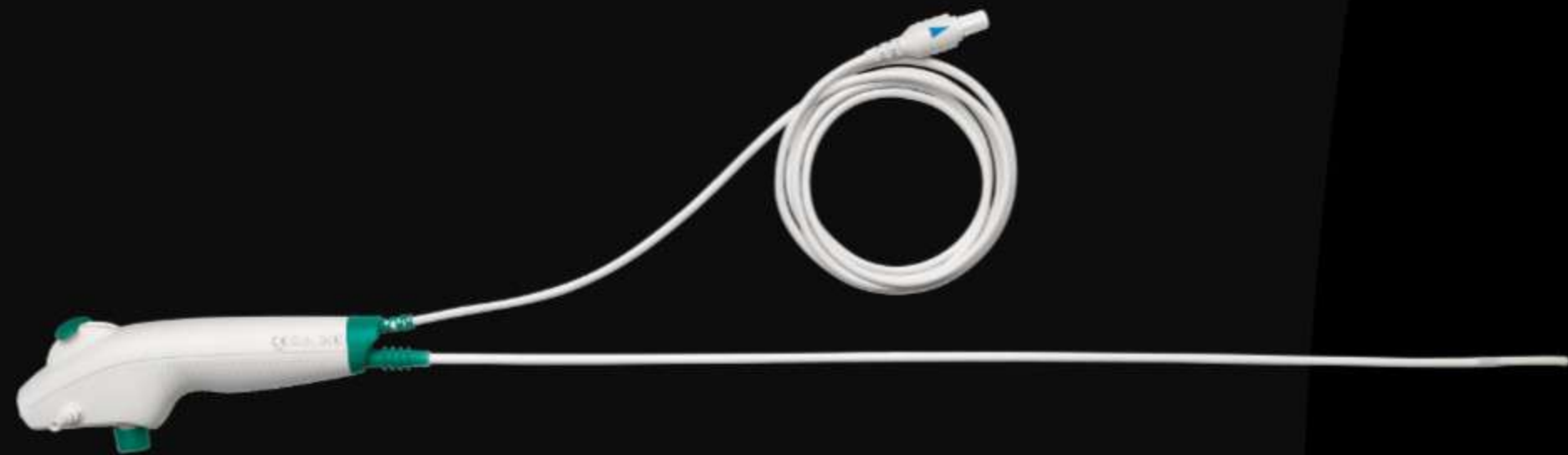


Due to the use of the Thiel cadavers with texture and flexibility similar to the human body, real ECHO anatomy, you will be able to recreate situations that are Limitating the methods are complications that we are find in everyday clinical practice to reality.



**Take advantage of consulting your tutor!**





# FOR WHOM THIS COURSE?

You will move from SIMPLE to COMPLEX

For professionals interested in studying and improving emergency skills & interventions around airway, thoracic, abdominal, vascular

The ability to use ultrasonic navigation to diagnose and perform various interventions (decompression, thoracocentesis, pericardiocentesis, thoracic & abdominal regional anesthesia etc.)





# PRACTICAL COURSE AT 99,9%



To perform emergency interventions, do not do tricks, you have to work routinely.



We combine Point of Care Ultrasound diagnostic protocols with emergency interventions under ultrasound guidance on the Thiel CADAVERs





# SCHEDULE

ROTATIONS OF 1 HOUR 20 MIN FOR EACH CADAVER STATION

- 8:00-8:30 → Registration and delivery of documentation
- 8:30-9:00 → Welcome and presentation of the course
- 9:00-9:15 → Coffee break
- 9:15-13:15 → 3 rotations (1 hour 20 min/rotation)
- 13:15-14:00 → Dinner
- 14:00-18:00 → 3 rotations (1 hour 20 min/rotation)





# DAY-1 MORNING

## Station 1

Airway:

Direct & video laryngoscopy,

Supraglottic devices,

Bronchoscopy



## Station 2

Regional anesthesia:

Thoracic epi,

Paravertebral,

ESP, PEC, BRILMA,

TAP, Rectus sheath

TAP PECS I/II Serratus  
QLB I/2/3 ESP BD-TAP  
ACB Fascial Plane Blocks SPEDI  
iPack Femoral Triangle Block RLB  
MTP PSPS SSPS RISS PENG  
Shamrock MICB  
Lumbar Plexus TQL Clavipectoral  
@amit\_pawa

## Station 3

FOCUS TTE

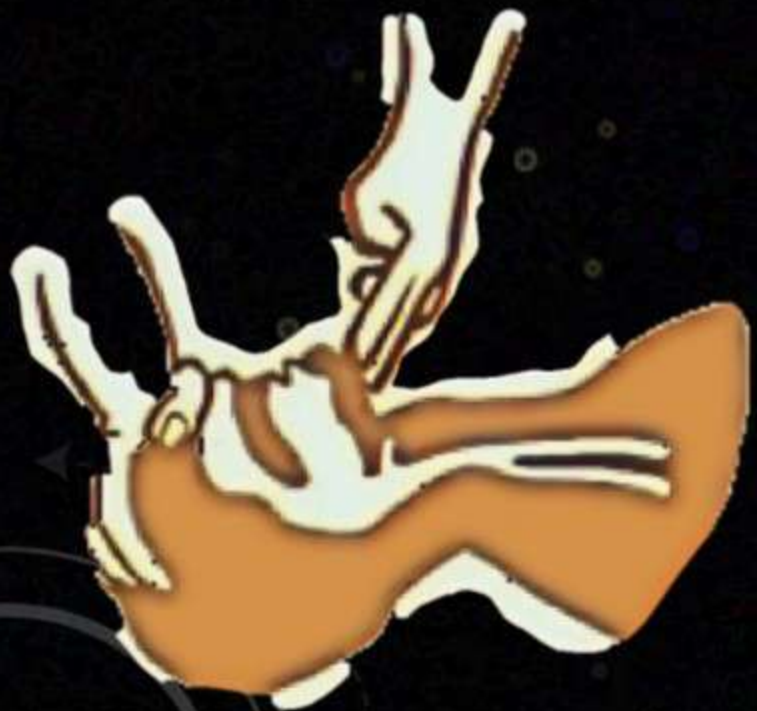




# DAY-1 AFTERNOON

## Station 1

Surgical Airway:  
CRICO,  
Tracheostomy



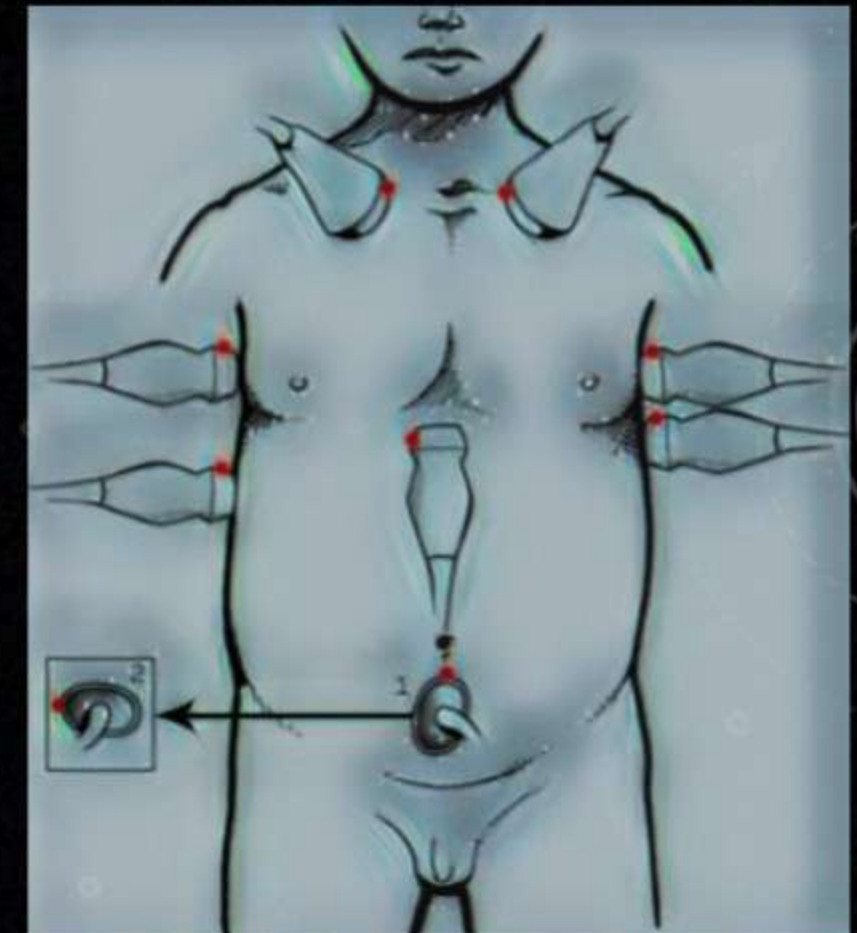
## Station 2

Lung Ultrasound,  
Thoracic decompression,  
Thoracic tube



## Station 3

eFAST,  
Paracentesis





# DAY-2 MORNING

## Station 1

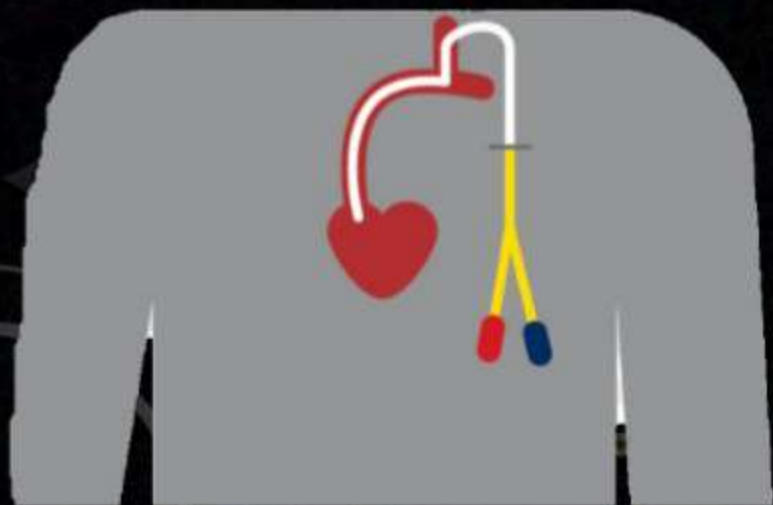
Vascular access:

IJV,

ScV, AxV,

Femoral,

Peripheral artery & Vein

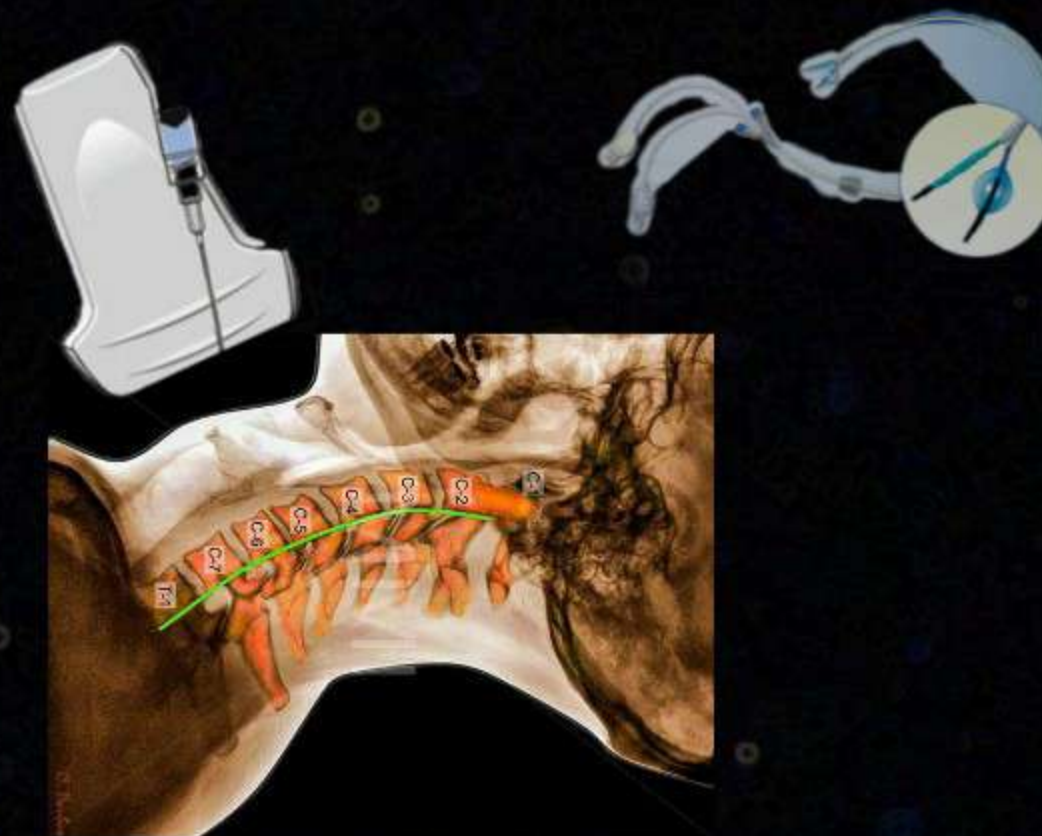


## Station 2

Airway ultrasound,

Regional anesthesia for airway,

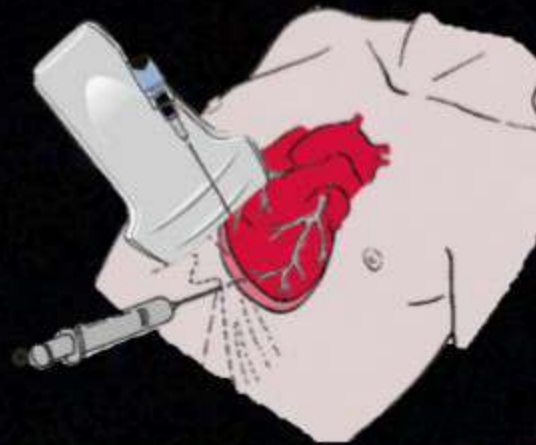
Bronchial blockers



## Station 3

Cardiac tamponade,

Pericardiocentesis





# DAY-2 AFTERNOON

## Station 1

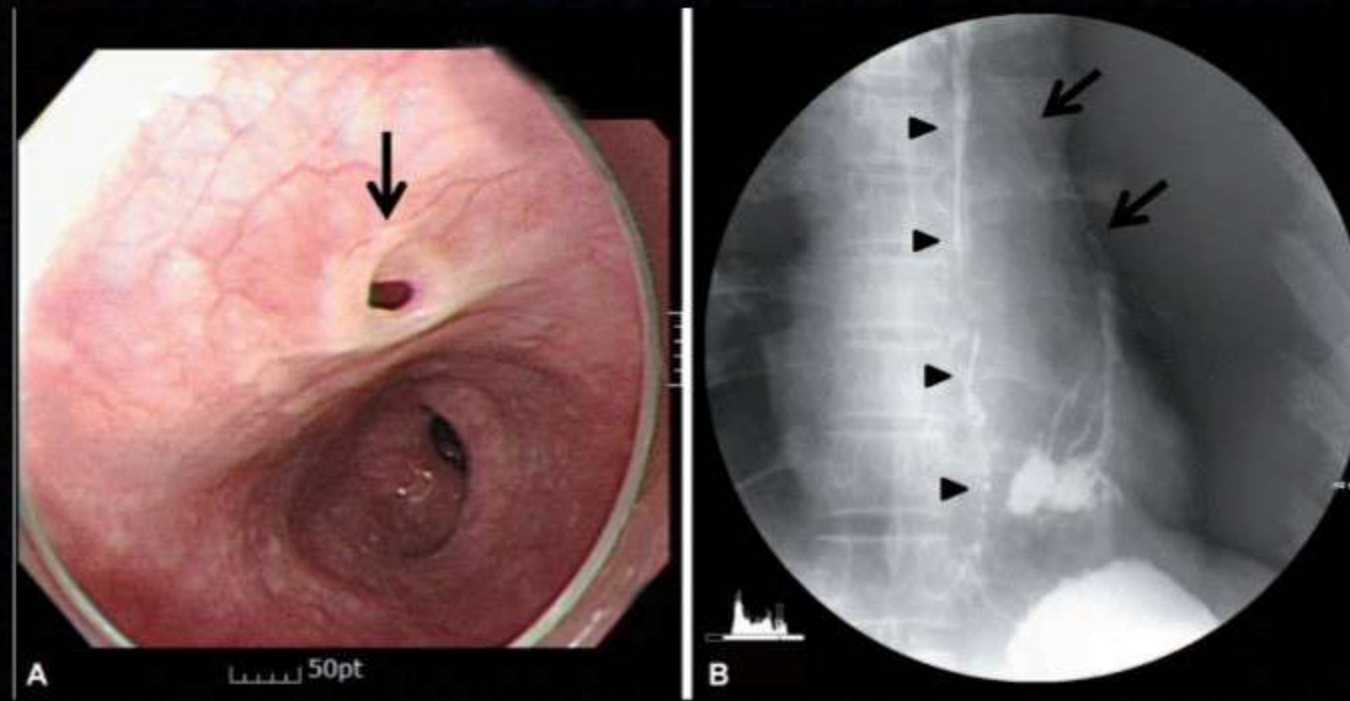
CADAVER SALAD

(Suction Assisted Laryngoscopy  
Airway Decontamination)



## Station 2

Broncho-esophageal fistula  
Management



## Station 3

Free station





# FIRST LEVEL TEACHERS

A TEACHING TEAM WITH  
EXTENSIVE EXPERIENCE IN  
AIRWAYS, EMERGENCIES &  
INTERVENTIONS



*Vadim Sizov*



*Mario Fajardo*



*Artemy Okhotin*



*Vsevolod Lykhin*



ONLY 20 MINUTES FROM THE AIRPORT TO THE CENTER OF MADRID.



The practices of these courses are possible thanks to the Program of Bodies for Teaching and Research of the Faculty of Medicine of the Autonomous University of Madrid.

In the best and most equipped room of anatomical dissections in Spain, at the Autonomous University of Madrid.